



Quad Axle Flats • Step Decks • Super B-Trains

Flat-Deck Transportation Service Throughout North America



1-800-663-0636

Our Story



Motrux started out in 1974 as the designated carrier for MacMillan Bloedel (now Weyerhaeuser) when we were contracted to haul its building materials to distribution centers throughout Western Canada. By focusing on the basics like hard work and great service, we earned our reputation and successfully grew the business year after year.



Over the years Motrux has evolved from a designated carrier, serving a few specific customers in Western Canada, to one that serves many customers across a variety of industries throughout North America.

Our reputation has been earned through years of providing reliable service and innovative transportation solutions – something we believe we do better than anyone else.

A Solid History You Can Rely On

1974

Motrux Inc. founded in Vancouver, British Columbia, Canada as a designated carrier for MacMillan Bloedel building products.

1988

Motrux is the first carrier to market in Canada with a fleet of new, maximum payload Super B-Trains. Expanded coast- to-coast service and opened a branch office in Toronto.

1994

Motrux becomes the largest Super B-Train carrier in Canada operating over 70 units.

1996

Motrux expands service offerings with Step-Deck and Low-Bed equipment in order to provide service for customers with over-dimensional freight requirements throughout North America.

Today

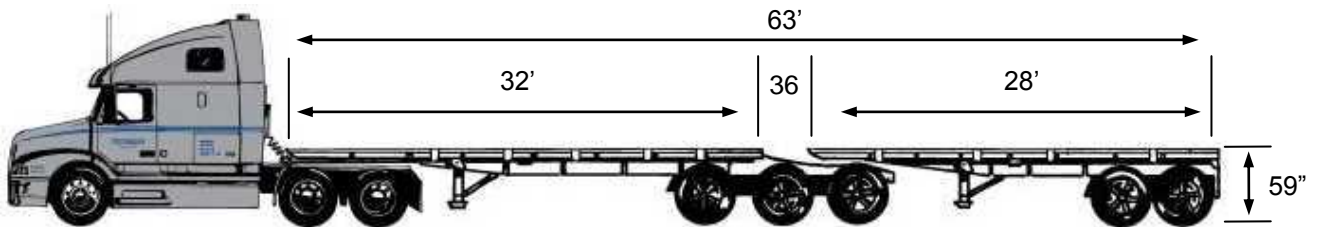
Our highly equipped fleet of lightweight all-aluminium trailers hauls the highest payloads in the industry. Roll-tarp Flat decks and Super B's ensure maximum product protection. 24/7 Web-based Cancom®Satellite System offers customers load tracking ability and direct communication with the truck.

Super B-Train Divison

Motrux was the first carrier to operate Super B-Trains in Canada back in 1988. Our solid reputation in Canada has been built over the years through the exceptional service that this division has consistently provided to customers from coast to coast.

We offer two equipment types to service your unique transportation needs:

1. **Super B-Train** - for over-dimensional loads or standard capacity loads of up to 96,000lbs



- 32' Lead / 28' Pup-Trailer
- Deck Width 102"
- All-aluminium lightweight structure for maximum payload (96,000 lbs)
- Air-Ride with load gauges
- Satellite Tracking System
- Weather proof manual tarp available

2. **Roll-Tarp Super B-Train** - As industry innovators we now offer a roll-tarp version of our high capacity Super B-Train for standard loads (up to 92,000 lbs) requiring maximum protection.



- 32' Lead / 28' Pup-Trailer
- Inside Width of 8' 7" or 106"
- Inside Height of 8' 6" or 105"
- Aluminium/Steel construction strength and maximum payloads (92,000lbs)
- Air-Ride with load gauges
- Satellite Tracking System
- Weather-proof retractable roll-tarp system
- Top or Side loading flexibility

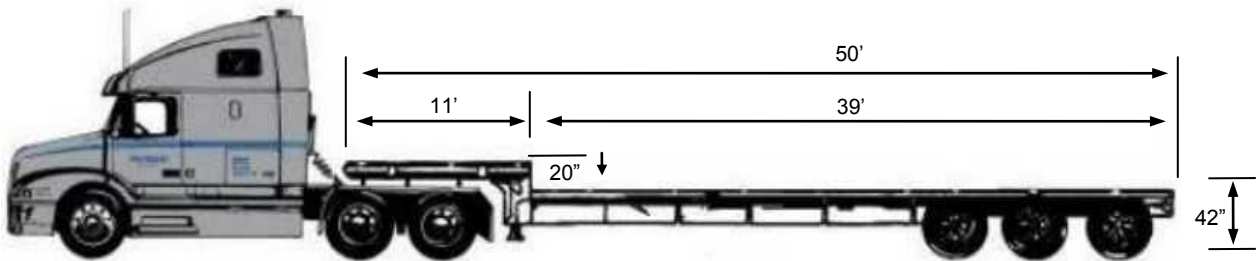
Step Deck Division

Our Step Deck Division operates throughout Canada and the USA. This division is comprised of mainly Tri-dem Axle, all-aluminium, lightweight equipment designed to offer our customers **maximum payloads**.

Perfect for hauling over-dimensional freight and industrial equipment or components.

We offer the following equipment to service your unique transportation needs:

- **Tri-Axle Step Decks** - for over-dimensional loads or standard capacity loads of up to 65,000lbs Maximum payload in Canada or 46,000lbs payloads in the USA



- 50' Long
- Deck Width of 102"
- All-aluminium lightweight - maximum payloads (65,000lbs CDN / 46,000 lbs USA)
- Air-Ride with load gauges
- Satellite Tracking System
- Weather-proof manual tarping available
- Great for over-dimensional loads

We also offer the following specialized equipment to compliment our Step Deck Division. Used for any extra-height* or extra-heavy hauls**

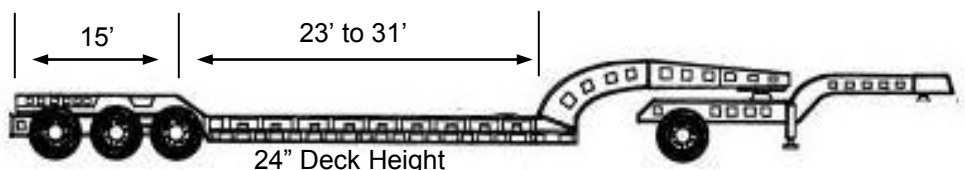
Double Drop Deck*

- 48' L
- Air Ride with load gauges
- 102 inches wide
- 48,000 lb payload
- Licensed For Canada/USA



Multi-Axle Double Drop**

- Air Ride with load gauges
- 102 inches wide
- Outriggers to 126 inches
- 100,000 lb payload
- Licensed for North America

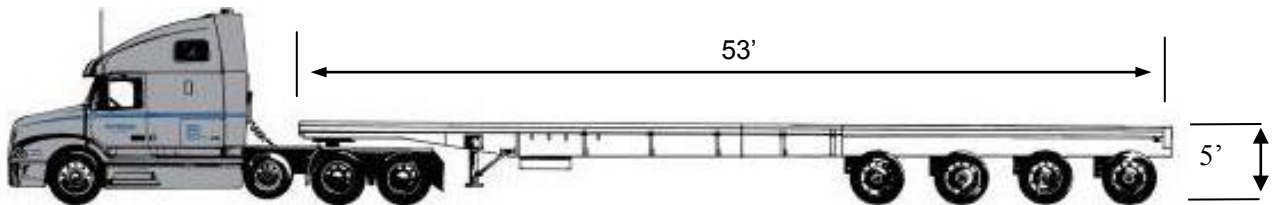


Quad Axle Flat Division

Our Quad Axle Flat Division operates in both Canada and the USA. We differentiate ourselves from our competitors by providing our customers with **maximum payloads and maximum product protection** through our innovative, all-aluminium, lightweight equipment.

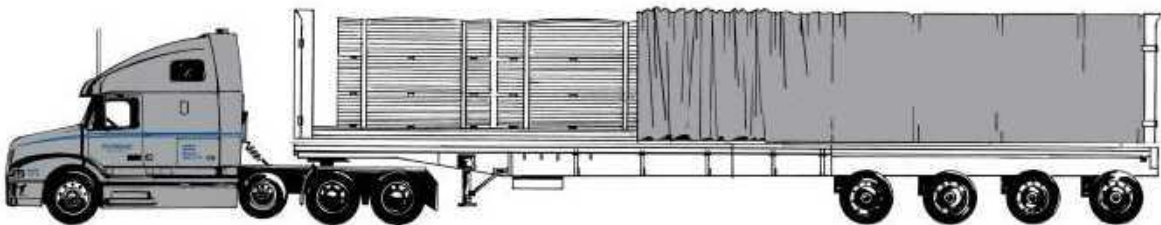
We offer two equipment types to service your unique transportation needs:

1. **Open Flats** for over-dimensional loads or standard capacity loads of up to 68,000lbs (Maximum payloads vary from State to State)



- 53' Long
- Deck Width of 102"
- All-aluminium lightweight structure for maximum payload (68,000 lbs)
- Air-Ride with load gauges
- Satellite Tracking System
- Weather proof manual tarping available

2. **Roll-Tarp Flats** that make use of our exclusive "extra-wide" roll-tarp system to ensure maximum product protection. Load capacity of 64,000lbs



- 53' Long
- Inside Width of 8' 7" or 106"
- Inside Height of 8' 6" or 105"
- All-aluminium lightweight structure for maximum payloads (64,000lbs)
- Air-Ride with load gauges
- Satellite Tracking System
- Weather-proof retractable roll-tarp system
- Top or Side loading flexibility

The Roll-Tarp Advantage

Our commitment to using only the best equipment available delivers added value and significant cost savings for our customers.

That is why we offer our customers Roll-tarp equipment (Super B-Train and Quad Axle Flat divisions).

In fact, as an industry innovator, we helped pioneer the design and development of today's flat-deck retractable roll-tarp systems.

How it Works. A heavy-duty vinyl tarp is mounted on lightweight aluminium arches, which glide forward and backward like an accordion. The system combines all the benefits of a Flatbed trailer with the protection of a Dry Van.



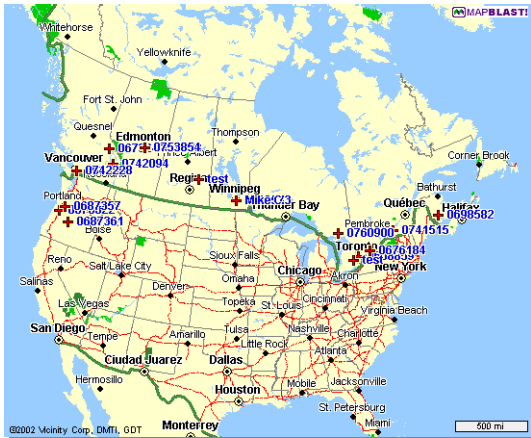
Roll-Tarps deliver the following benefits

- **Improved Driver Safety** – retractable roll-tarps can be operated single-handedly, sliding into position quickly and easily, eliminating the dangers of manual tarping
- **Superior Product Protection** – an easy way to reduce claims. Roll-tarps never touch the product and the system is designed to provide a weatherproof seal to keep product dry in even the most adverse weather conditions
- **Reduced Loading Time** – speed and ease of use cut loading time by **2** hours compared to manual tarping. In a matter of minutes, Roll-Tarps glide forward, backwards, or both ends toward the middle
- **Maximum Loading Flexibility** – roll-tarps allow for both top and side loading / off-loading and cover all types of loads
- **Unique Advertising Opportunity** – graphics can be easily added to the roll-tarp to promote your brand. Turn our roll-tarp into your mobile billboard with 90% market penetration!

Our Technology

Satellite tracking and communications is one of the tools Motrux utilizes to ensure that we remain a market leader in customer service and on time deliveries. Our use of Cancom® the world's largest and most reliable mobile data solutions network available, offers many benefits:

- **Quick Web Based Access** - through NETracs® online, enables customers to remotely monitor or communicate with the truck from anywhere with an Internet connection
- **Instant Messaging** – direct email ability via NETracs online, enables customers to communicate directly with our drivers
- **Improved Supply Chain Visibility** - positioning reports and visual mapping of our trucks via satellite and management allows customers to see the exact location of our equipment
- **24/7 Reliability** – unlike cellular, satellite service has no dead zones. This technology enables Motrux operations' personnel monitor your load and maintain contact from pick-up to delivery



NETracs® Satellite Tracking System

Easily accessible, web-based satellite tracking service that enables both visual and direct contact with our trucks

For more information on how to track your next load, please contact Motrux at 1-800-663-0636 or email one of our representatives directly.

Equipment Availability Update

Toll Free (USA and Canada) 1-800-663-0636
Toll Free (USA and Canada) 1-800-663-0636

Equipment Availability

The Following Trucks are Available for Loading

Equipment	Refund	Units	Origin Area	Destination	Availability
57 Tri-Axle Step Deck	46,000 lbs	1	Dallas, TX	Calgary, AB	March 7
57 Tri-Axle Step Deck	65,000 lbs	1	Toronto, ON	Vancouver, BC	March 9
48 Tri-Axle Step Deck	46,000 lbs	1	Los Angeles, CA	Toronto, ON	March 9

* Motrux Lightweight Step Deck Equipment - MAXIMUM PAYLOAD, MAXIMUM PROTECTION.
 To Secure Equipment or Request a Rate Quote Please Contact

Darren King Direct: 936-527-1968 Toll Free: 1-800-627-1969 dking@motrux.com	Dan Frosco Direct: 936-527-1967 Toll Free: 1-800-627-1967 dfrosco@motrux.com
---	--

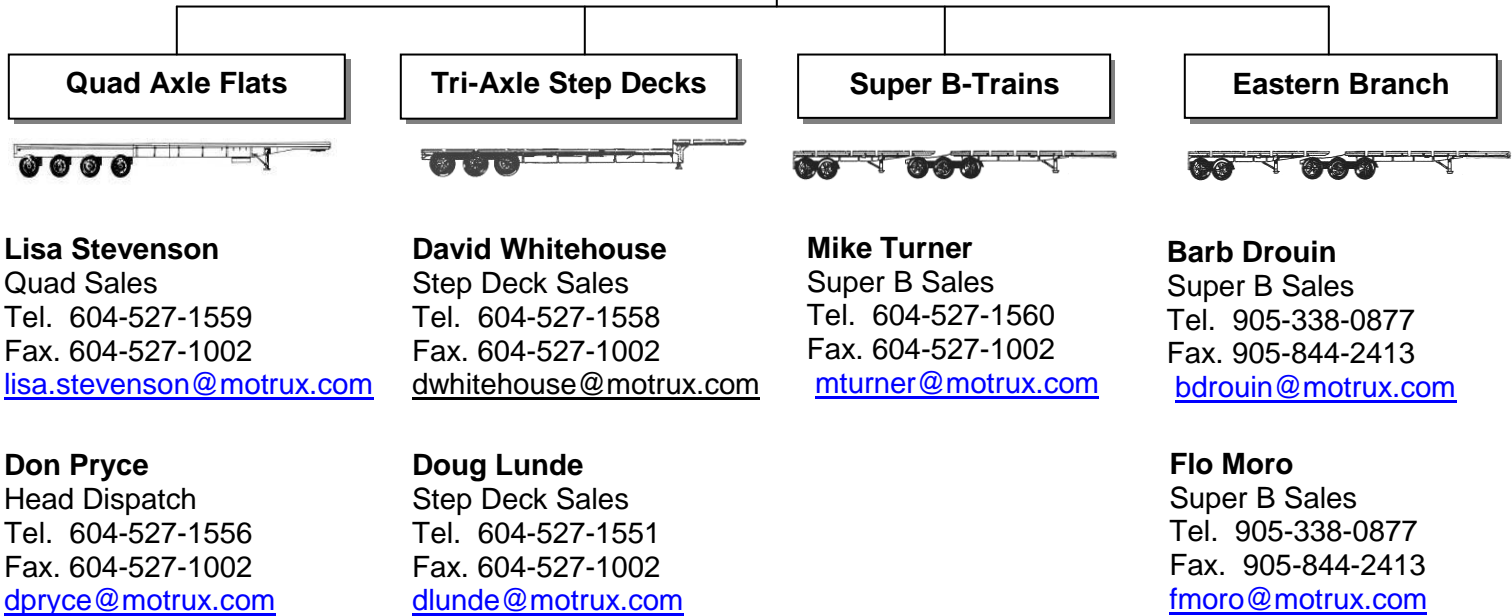
MOTRUX INC. 731 BELLEVUE WAY, DELTA, BC CANADA V9H 5M9 www.motrux.com

To edit/remove your email address or to improve this e-mailing this service please click [help](#).
Thank you.

Receive email or fax notification of Equipment Availability when we have trucks in areas of interest to you.

For more information on how to register for this free service, please contact Motrux at 1-800-663-0636 or email one of our representatives directly.

Sales & Dispatch Contacts



After Hours Emergency Contact: Don Pryce 604-786-2794



731 Belgrave Way • Delta • British Columbia • Canada • V3M 5R8 • Tel 604-527-1000
Toll Free 800-663-0636 • Fax 604-527-1002
www.motrux.com



23 Washington Avenue • Oakville • Ontario • Canada • L6K 1W5 • Tel 905-338-0877
Toll Free 800-387-3490 • Fax 905-844-2413
www.motrux.com

Corporate Information

Incorporated: 1974 (Alberta)

Head Office: 731 Belgrave Way
Delta, BC V3M 5R8
Tel (604) 527 - 1000
Toll (800) 663 - 0636
Fax (604) 527 - 1002
Online www.motrux.com

Branch Office: Oakville, Ontario
(905) 338-0877

GST Number: R103776852
ICC Number: 154912



Management Contacts:

President: Doug Lunde
Operations Manager: Brian Stevenson
Controller: Yvonne Hebein
Safety & Compliance: Lisa Stevenson
Accounts Receivable: Marg Pollock

Banking Information:

Bank of Montreal
Commercial Services
Joe Corrado
595 Burrard Street
Vancouver, BC V7X 1L7
(604) 789-6048

References:

Calmont Leasing Ltd. 5475 53rd Street S.E. (800) 463-5943
Barry Smith Calgary, AB T2C 4P6

Kal Tire Ltd. P.O. Box 1240
A/R Vernon, BC V1T 6N6 (250) 542-2366

HSBC 1500 – 888 Dunsmuir St
Shane Bondy Vancouver, BC V6C 3K4 (604) 642-4307

**Payment policy is Net 30 days from receipt of invoice.
A Motrux Purchase Order must authorize all purchases.**